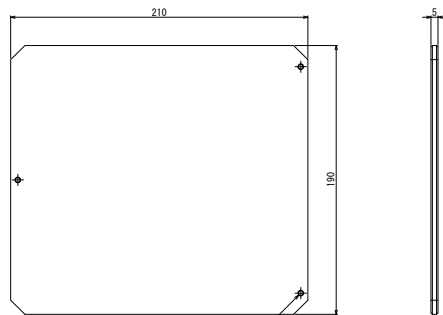
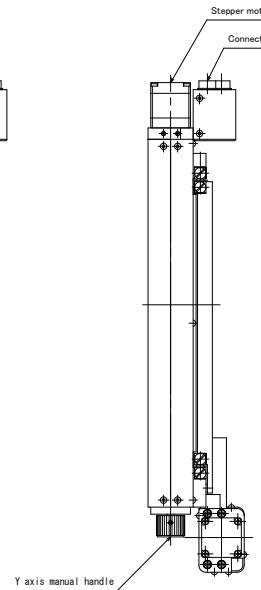
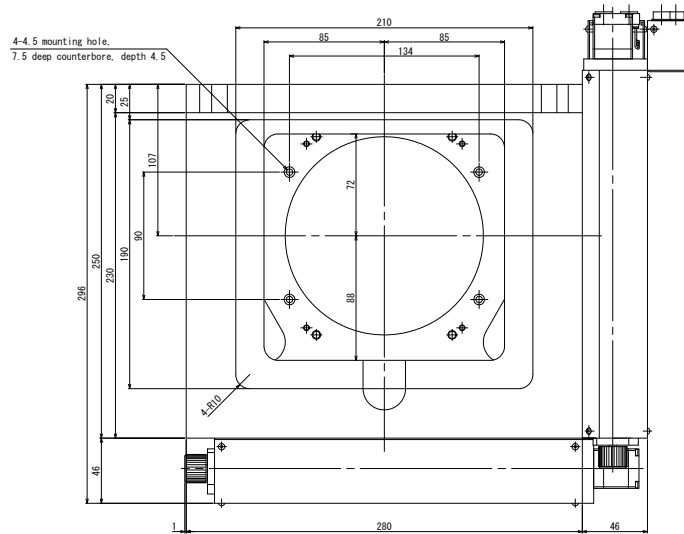
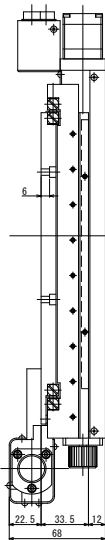
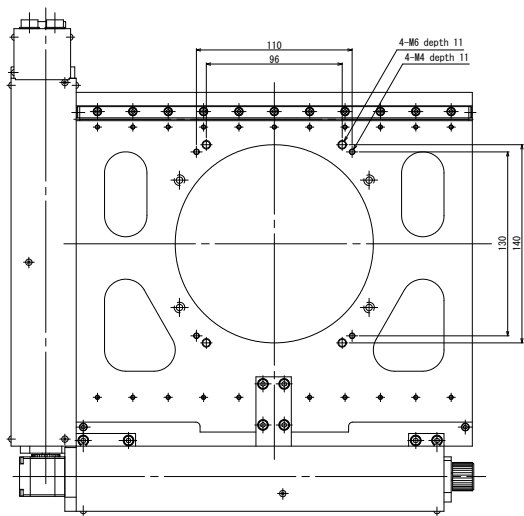
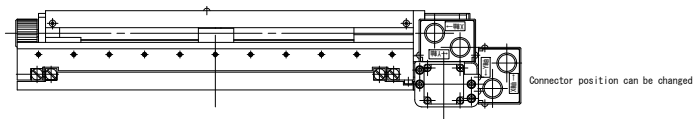
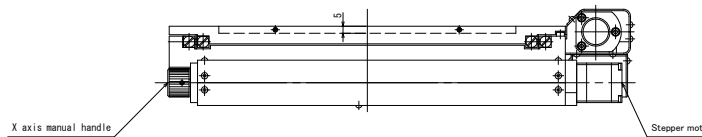


NIKON ECLIPSE LV150/LV150A spacer included



Level adjustment screw (3 points)

Aluminum plate



MSS-150D-NA  
Micro Scanning Stage  
CHUO PRECISION INDUSTRIAL CO., LTD.

•Mounting screw for adapter : Hexagon socket head cap screw M4, 4 screws  
•Mounting screw for spacer : Hexagon socket head cap screw M4, 4 screws