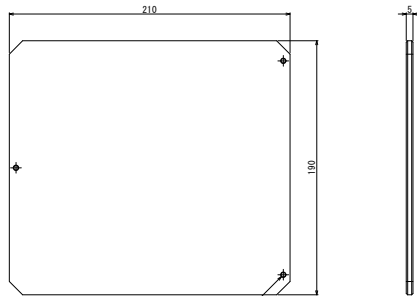
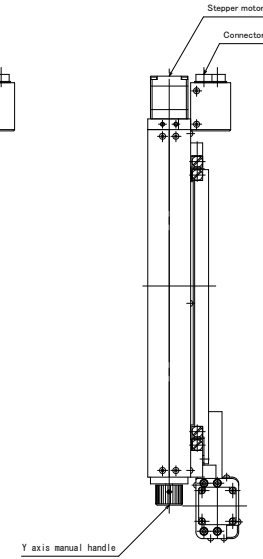
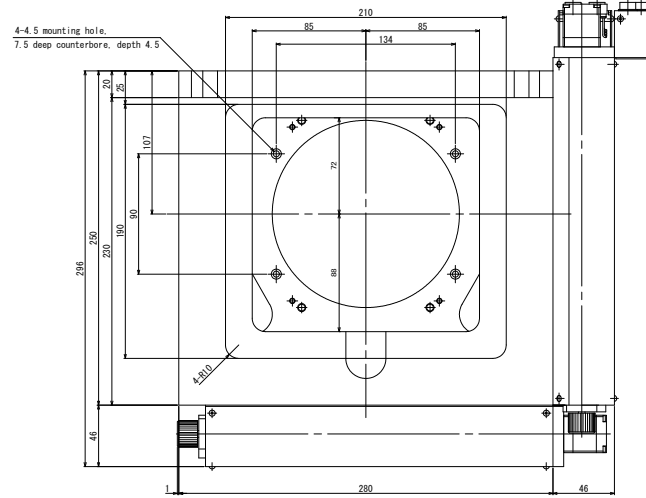
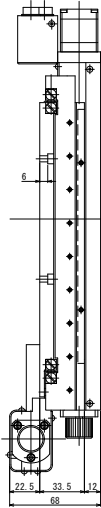
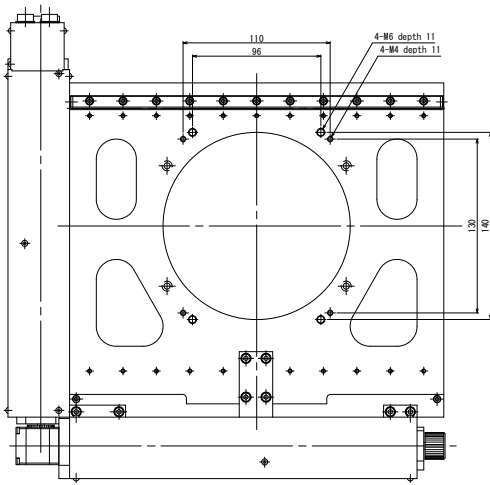
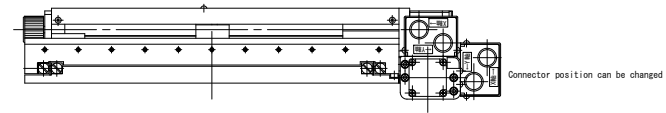
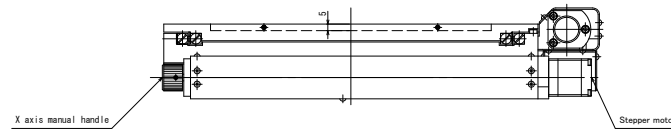


NIKON ECLIPSE LV1000, LV1000-U spacer included



Level adjustment screw (3 points)
Aluminum plate



MSS-150D-NB
Micro Scanning Stage
CHUO PRECISION INDUSTRIAL CO., LTD.

*Mounting screw for adapter : Hexagon socket head cap screw M4, 4 screws
*Mounting screw for spacer : Hexagon socket head cap screw M4, 4 screws