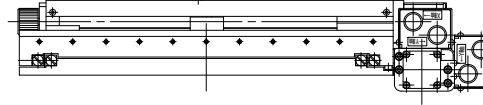
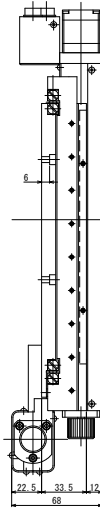
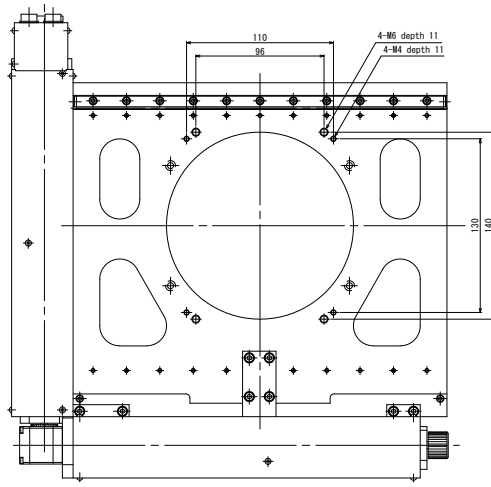


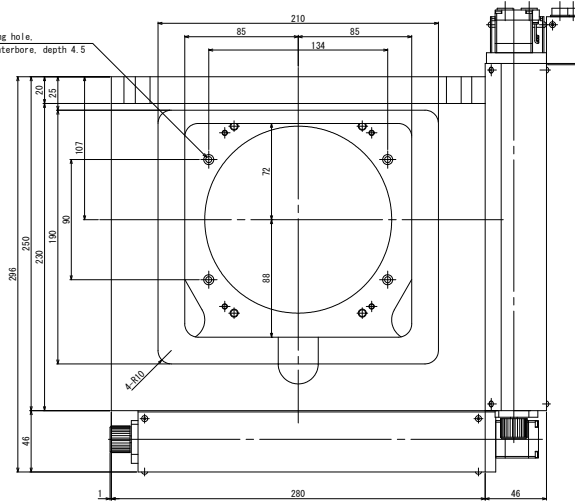
NIKON ECLIPSE L200 spacer included



Connector position can be changed

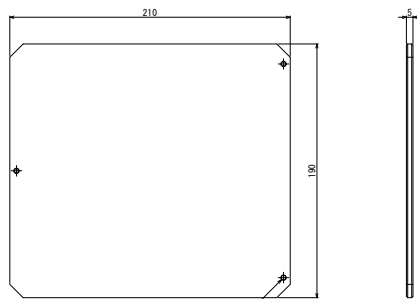
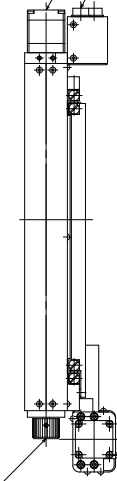


4-4.5 mounting hole
7.5 deep counterbore, depth 4.5

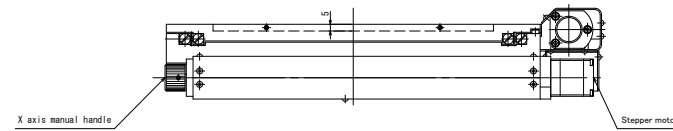


Y axis manual handle

Stepper motor
Connector



Level adjustment screw (3 points)
Aluminum plate



MSS-150D-NC
Micro Scanning Stage
CHUO PRECISION INDUSTRIAL CO., LTD.

•Mounting screw for adapter : Hexagon socket head cap screw M4, 4 screws
•Mounting screw for spacer : Hexagon socket head cap screw M4, 4 screws