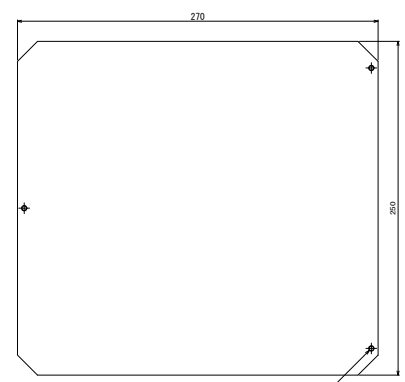
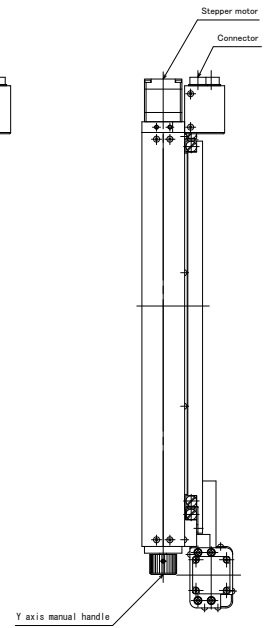
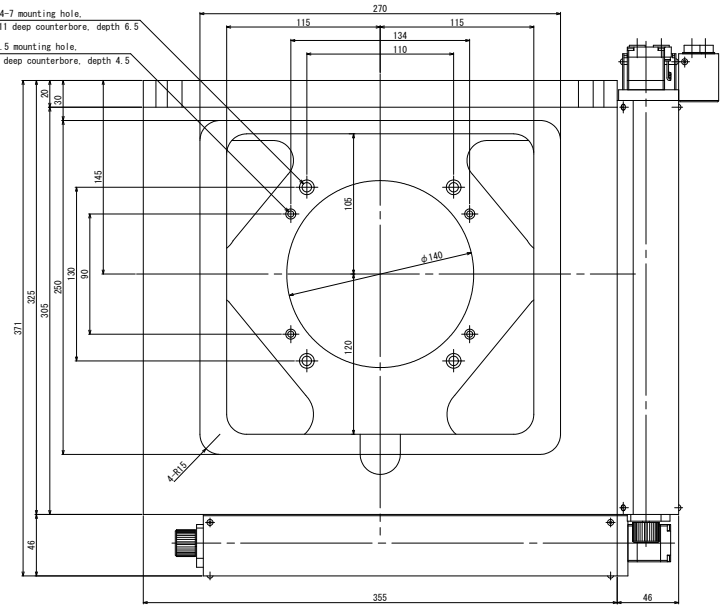
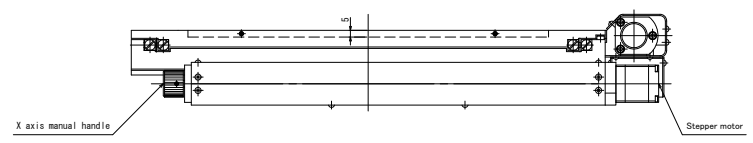


4-7 mounting hole,  
11 deep counterbore, depth 6.5  
4-4.5 mounting hole,  
7.5 deep counterbore, depth 4.5



Level adjustment screw (3 points)  
Aluminum plate



MSS-200D  
Micro Scanning Stage  
CHUO PRECISION INDUSTRIAL CO., LTD.

•Mounting screw : Hexagon socket head cap screw M4, 4 screws  
•Mounting screw : Hexagon socket head cap screw M6, 4 screws