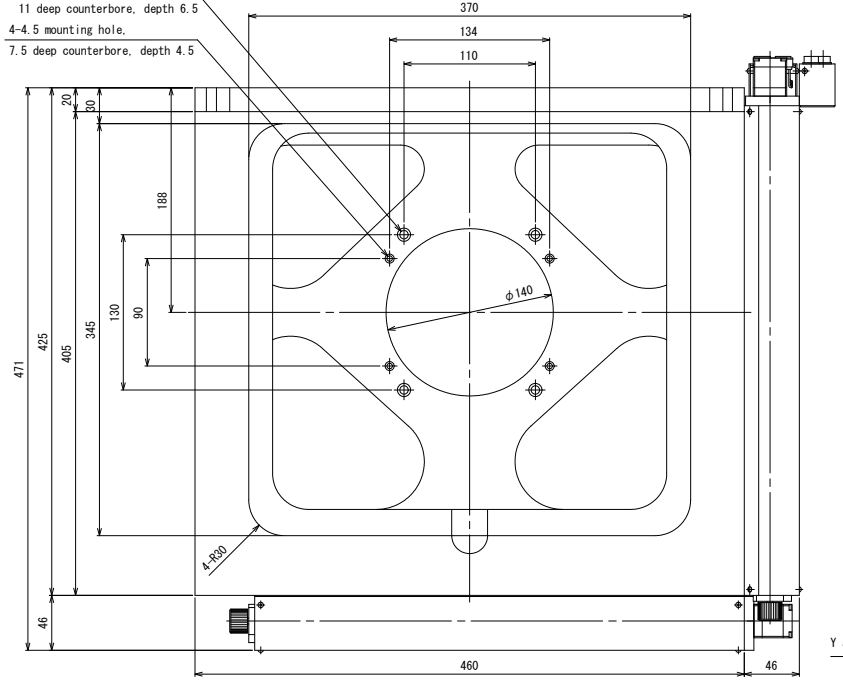
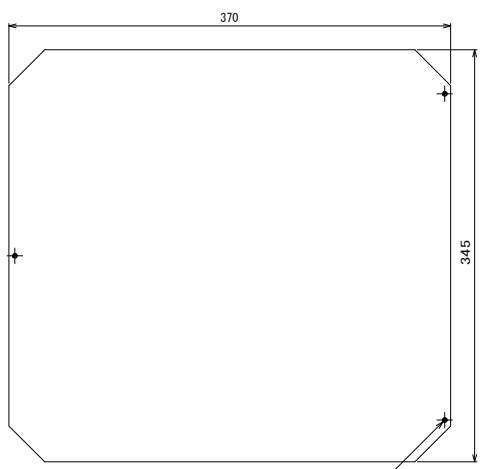
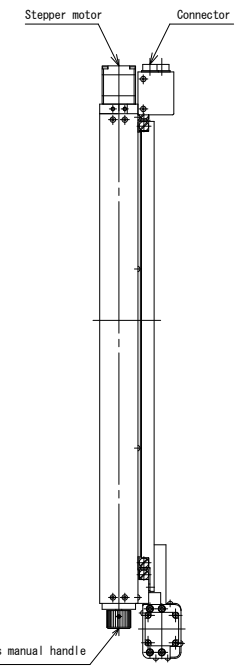


4-7 mounting hole,  
 11 deep counterbore, depth 6.5  
 4-4.5 mounting hole,  
 7.5 deep counterbore, depth 4.5

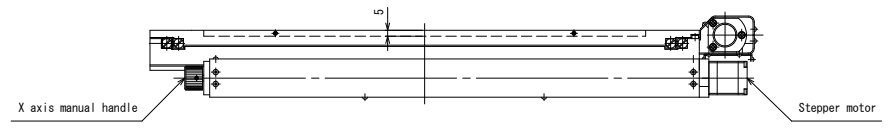



Connector position can be changed



Level adjustment screw (3 points)

Aluminum plate



MSS-300D  
 Micro Scanning Stage  
 CHUO PRECISION INDUSTRIAL CO., LTD.  
 rev-

\*Mounting screw : Hexagon socket head cap screw M4, 4 screws  
 \*Mounting screw : Hexagon socket head cap screw M6, 4 screws